

# Gen2 Avenir Power Pole Installation guide



## Parts

1 way plate, 2 way plate, 3 way plate, 4 way plate, Inline plate  
Plate Screws (4) 10-24 x 1/2" 5/32 Allen drive  
Glide 5/16-18 x 1-1/2"  
Power pole upper extension  
Power pole lower  
Upper race way assembly  
Insert connectors (4)  
Wire harness (5-wire or 8-wire)  
Ceiling cover plates  
Ceiling bracket kit

## Tools Needed

3/16" Allen Driver  
5/32 Allen wrench

# Gen2 Avenir Power Pole Installation guide

## Parts Identifier



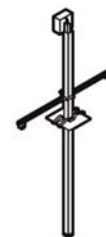
Insert connector



Glide



Plate Screws (4)



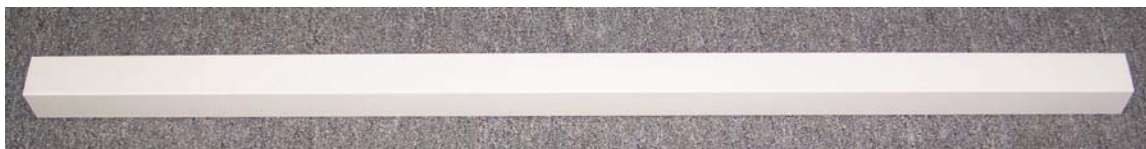
Ceiling bracket



Upper race way assembly



Power pole lower portion



Power pole upper portion

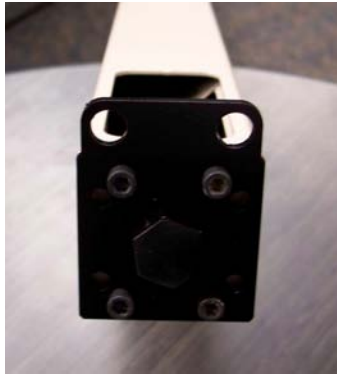
# Gen2 Avenir Power Pole Installation guide

## Step one:

Figure out the configuration of the power pole (example 1-way)

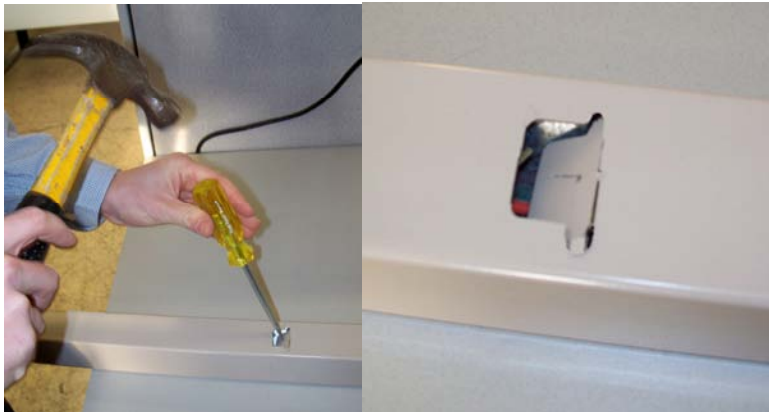
## Step two:

Use the 1-way plate and attach it with the 4 plate screws, then install leveling glide into center hole



## Step three:

Identify the height of the panels that the pole will be hooking up to and knock out the perforated slots



# Gen2 Avenir Power Pole Installation guide

## Step four:

Having the pins on the panel that you are attaching to drop them into the mounting plate on the bottom of the power pole.



## Step five:

Slide the insert connector in the slot that was knocked out in step 3 and install two panel connector screws to hold in place



## Step six:

Install upper half of power pole with raceway assembly by sliding onto the lower portion of the power pole.

## Step seven:

Feed wire harness up through power pole into junction box