

Gen2 Avenir Glass Stacker
Installation guide



Parts

Glass stacker
Corner porkchop (1 per Glass stacker)
Inline porkchop (1 per Glass stacker)
Stacker bracket (2 per Glass stacker)

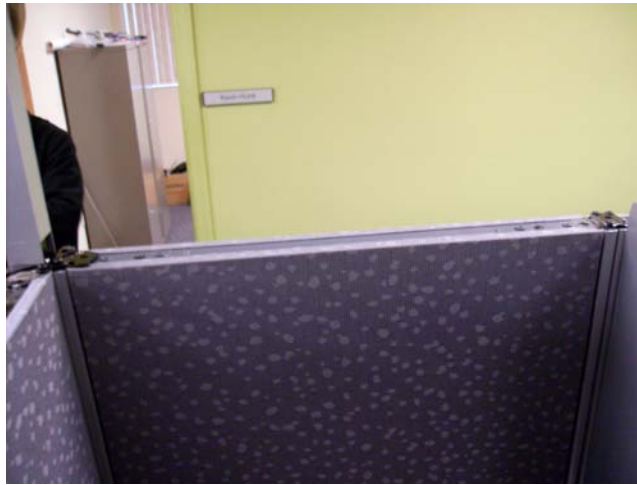
Tools Needed

Drill
3/16" Allen Driver
3/8" Nut driver
8" Driver extension
Glass cleaner

Gen2 Avenir Glass Stacker Installation guide

Step one:

Remove all top caps and top cap retainers. This product will not be needed, the glass stacker come with new top caps and retainers.



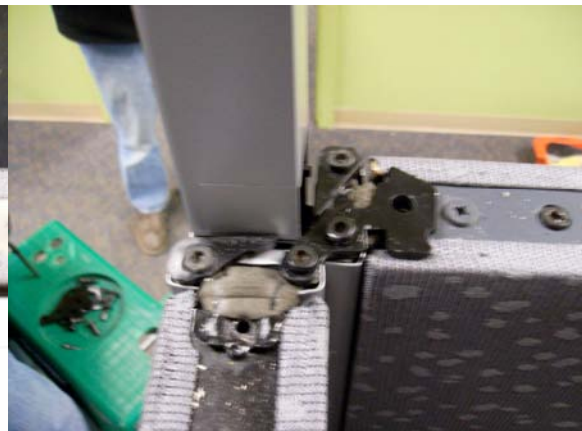
Step two:

Remove the standard porkchops and replace with inline and corner porkchops

INLINE PORKCHOP



CORNER PORKCHOP



Gen2 Avenir Glass Stacker Installation guide

Step three:

Install 1 stacker bracket on each end of the panel in first hole from edge of panel (marked in red)



Step four:

Install stacker by sliding down over stacker bracket.



Gen2 Avenir Glass Stacker Installation guide

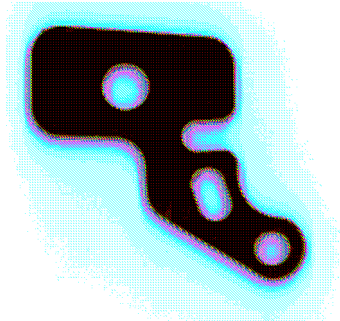
Step five:

Connect stackers together with standard porkchop connectors and install top caps

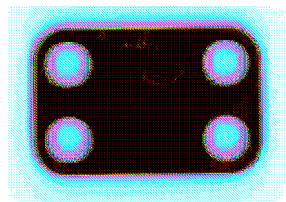


Gen2 Avenir Glass Stacker Installation guide

Corner porkchop



Inline porkchop



Stacker bracket

